



GAT MONTHLY MEMBERSHIP PROGRESS REPORT

Results as of: 10/31/2021

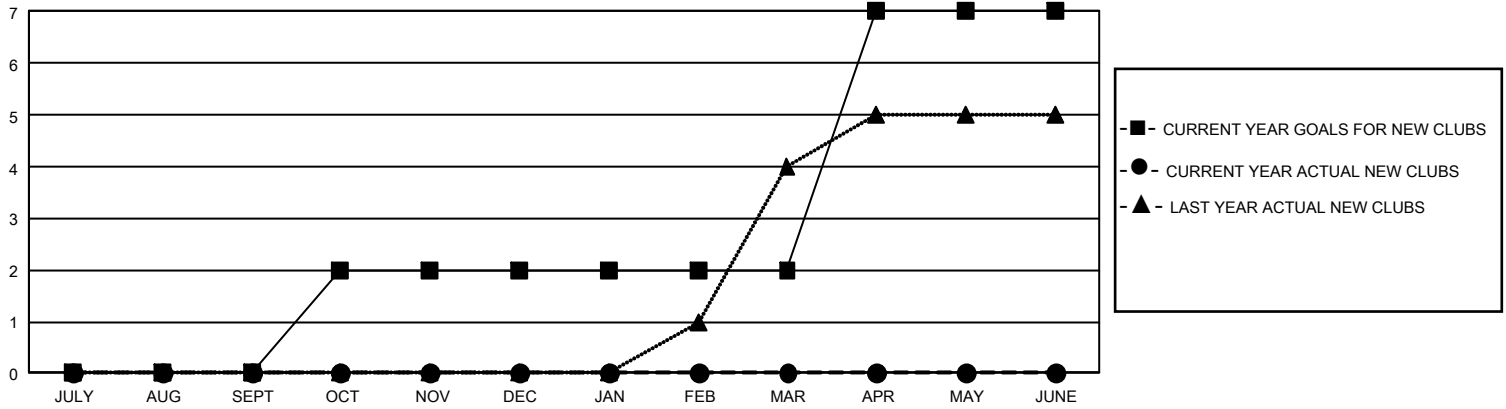
GMT Constitutional Area 7, Group B

REPORT DOES NOT INCLUDE CLUBS IN UNDISTRICTED AREAS.

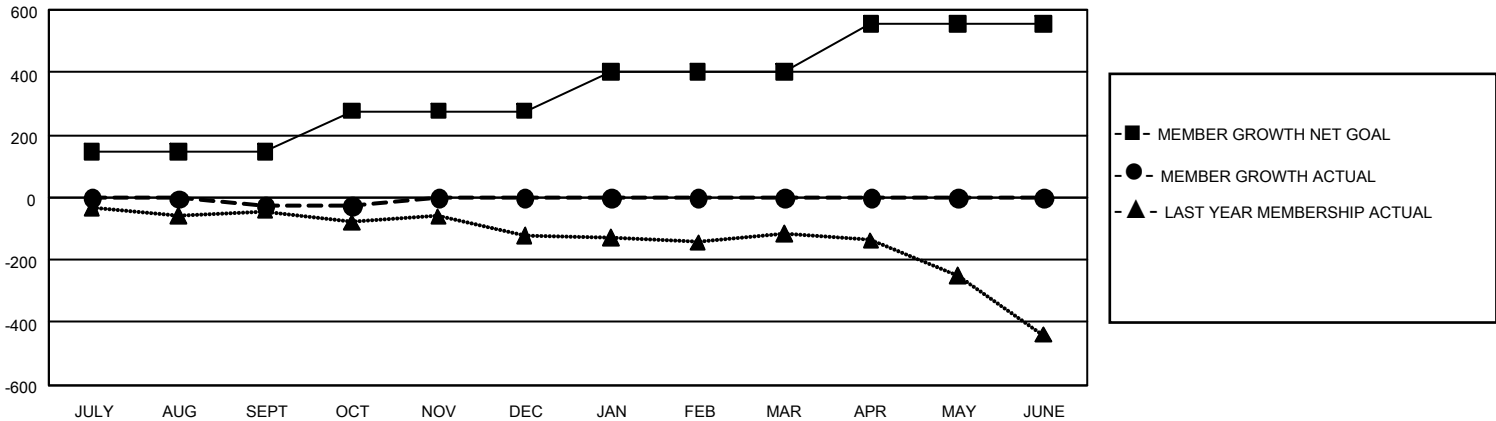
| Clubs | | | |
|-----------------------|---------------|-----------|---------------|
| RESULTS FOR 2021-2022 | | | |
| QUARTER | NEW CLUB GOAL | NEW CLUBS | DROPPED CLUBS |
| JULY/AUG/SEPT | 0 | 0 | 5 |
| OCT/NOV/DEC | 6 | 0 | 0 |
| JAN/FEB/MAR | 0 | 0 | 0 |
| APR/MAY/JUNE | 15 | 0 | 0 |

| Members | | | |
|-----------------------|------------------------|----------------------|--|
| RESULTS FOR 2021-2022 | | | |
| QUARTER | MEMBER GROWTH NET GOAL | MEMBER GROWTH ACTUAL | DROPPED MEMBERS ACTUAL (including transfers) |
| JULY/AUG/SEPT | 146 | 180 | 165 |
| OCT/NOV/DEC | 130 | 67 | 59 |
| JAN/FEB/MAR | 127 | 0 | 0 |
| APR/MAY/JUNE | 152 | 0 | 0 |

GOALS AND ACTUAL NEW CLUBS CUMULATIVE



GOALS AND ACTUAL MEMBERS CUMULATIVE



| | | | |
|--|--|--|-------------------------------------|
| DROPPED CLUBS: 5 | 117 CLUBS OF 323 ADDED 1 OR MORE NEW MEMBERS | GENDER DISTRIBUTION | |
| | | MALE 5,767 (68.13%) FEMALE 2,697 (31.86%) NON BINARY 1 (0.01%) PREFER NOT TO ANSWER 0 (0.00%) | |
| DROPPED MEMBERS | | CLICK HERE FOR CUMULATIVE MEMBERSHIP DATA | TOTAL FAMILY UNIT MEMBERS 758 |
| DECEASED 38 CLUB CANCELLED 0 OTHER 186 TOTAL 224 | | | FAMILY MEMBERS PAYING HALF DUES 382 |